

**Anti-Cytokeratin 7 Antibody**  
**Recombinant Mouse Monoclonal Antibody**  
**Catalog # AH13345****Specification**

---

**Anti-Cytokeratin 7 Antibody - Product Information**

Application	IHC-P, IF, FC
Primary Accession	<a href="#">P08729</a>
Other Accession	<a href="#">411501</a>
Reactivity	Human
Host	Mouse
Clonality	Monoclonal
Isotype	Mouse / IgG1
Calculated MW	51386

**Anti-Cytokeratin 7 Antibody - Additional Information****Gene ID** 3855**Other Names**

CK-7, K2C7, Keratin 55K Type II Cytoskeletal, Keratin Simple Epithelial Type 1 K7, Keratin Type II Cytoskeletal 7, Krt2-7, KRT7, Sarcolectin, SCL, Type II Mesothelial Keratin K7, Type-II Keratin Kb7

**Application Note**

IHC-P~N/A  
IF~1:50~200  
FC~1:10~50

**Format**

200ug/ml of recombinant MAb purified by Protein A/G. Prepared in 10mM PBS with 0.05% BSA &amp; 0.05% azide. Also available WITHOUT BSA &amp; azide at 1.0mg/ml.

**Storage**

Store at 2 to 8°C. Antibody is stable for 24 months.

**Precautions**

Anti-Cytokeratin 7 Antibody is for research use only and not for use in diagnostic or therapeutic procedures.

**Anti-Cytokeratin 7 Antibody - Protein Information****Name** KRT7**Synonyms** SCL**Function**

Blocks interferon-dependent interphase and stimulates DNA synthesis in cells. Involved in the translational regulation of the human papillomavirus type 16 E7 mRNA (HPV16 E7).

**Cellular Location**

Cytoplasm.

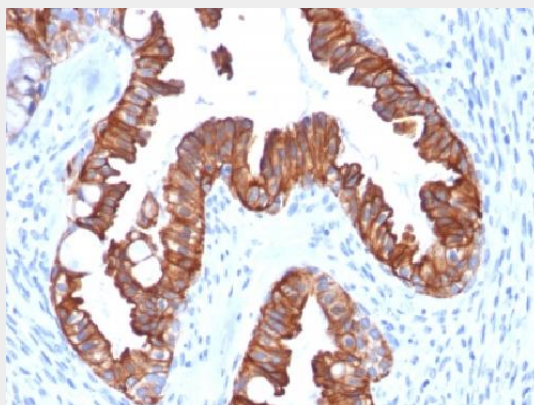
**Tissue Location**

Expressed in cultured epidermal, bronchial and mesothelial cells but absent in colon, ectocervix and liver. Observed throughout the glandular cells in the junction between stomach and esophagus but is absent in the esophagus.

**Anti-Cytokeratin 7 Antibody - Protocols**

Provided below are standard protocols that you may find useful for product applications.

- [Western Blot](#)
- [Blocking Peptides](#)
- [Dot Blot](#)
- [Immunohistochemistry](#)
- [Immunofluorescence](#)
- [Immunoprecipitation](#)
- [Flow Cytometry](#)
- [Cell Culture](#)

**Anti-Cytokeratin 7 Antibody - Images**

Formalin-fixed, paraffin-embedded human Endometrial Carcinoma stained with Cytokeratin-7 Recombinant Mouse Monoclonal Antibody (rOV-TL12/30).

**Anti-Cytokeratin 7 Antibody - Background**

It recognizes an intermediate filament protein (IFP) of 55kDa, which is identified as cytokeratin 7. This MAb is highly specific to cytokeratin 7 and shows no cross-reaction with other IFPs. Cytokeratin 7 is a basic cytokeratin, which is found in most glandular and transitional epithelia but not in the stratified squamous epithelia. Keratin 7 is expressed in the epithelial cells of ovary, lung, and breast but not of colon, prostate, or gastrointestinal tract. This MAb is highly useful in distinguishing ovarian carcinomas (keratin 7+) from colon carcinomas (keratin 7-).